

Take part in

# The Australasian CP Health Network Study

## ► AUS-CP MSK



### What is the study about?

Children with moderate to severe Cerebral Palsy (CP) are at risk of their hips displacing, developing scoliosis of their spine (a curve) and sustaining a bone fracture.

Our project aims to look at whether finding musculoskeletal problems earlier can lead to better treatments and reduce the chance of them getting worse.

### Who can participate?

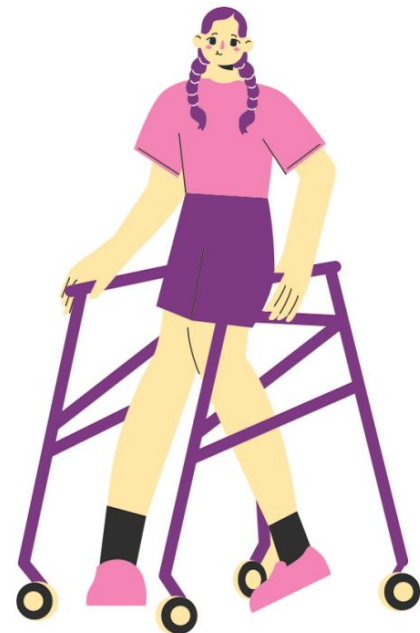
Any child with a diagnosis of CP; classified as GMFCS III, IV or V; aged between 4-12 years and able to travel to Starship hospital for the assessments.

### What is involved?

Each year over 4 years, we will look at your child's hips, spine, bone strength, nutrition, general health, physical activity levels and look at the health costs associated with CP.

To make participating in this study as easy as possible, we will try to make sure appointments related to this study will be attached to your child's regular hospital appointments.

A report of results from each assessment visit will be provided to you and your health practitioner to see how our child is progressing throughout the study.



Register your interest using  
[this email](#) or scan



SCAN ME

